



The Wisconsin Conservation Hall of Fame

Celebrating, Advancing & Sharing Wisconsin's Conservation Legacy

LEGACY

Spring 2020 Newsletter

Volume 26, Issue 1

FROM THE PRESIDENT



Patty Dreier

I guess you could say Wisconsin's conservation ethic runs in my blood. Dad was an avid conservationist and passed his love of nature

down to me. I am guessing you had someone like him in your own life. Someone who ignited your spirit of discovery by introducing you to protected places or places worth protecting. Someone who helped you develop down-to-earth knowledge and outdoor skills. Someone who modeled conservation values and gave you space to come into your own. Someone who helped you develop an interest in and a sense of belonging to the great conservation story being written by environmental heroes in our state.

Now, more than ever, there is a need for us to be purposeful

continued on page 2

OUR NEWEST INDUCTEES

Induction Ceremony April 25, 2020, Stevens Point, Wisconsin



Stephen Born



Jens Jensen



Stanley Temple

The Wisconsin Conservation Hall of Fame (WCHF) is excited to announce this year's inductees:

- **Stephen Born**, a UW-Madison Professor of Urban and Regional Planning with a focus on watersheds
- **Jens Jensen**, a landscape architect who founded The Clearing in Door County
- **Stanley Temple**, a Senior Fellow with the Aldo Leopold Foundation, Wildlife Biologist and UW-Madison professor.

They will join the 99 conservationists already inducted into the Hall of Fame.

See pages 4-6 to find out more about this year's inductees.

This year's Induction Celebration is Saturday, April 25th, in the Atrium at SentryWorld in Stevens Point. All are invited.

9:00 a.m. Reception

10:00 a.m. Induction Ceremony

1:00 p.m. Luncheon Buffet

The Reception and Ceremony are free. Reservations for the Luncheon Buffet (\$28) can be made online at: <http://bit.ly/WCHF2020> or mailed using the form at: WCHF.org/2020Induction.

Questions: Sunshine Buchholz, sbuchhol@uwsp.edu or 715-346-4992 (Schmeckle Reserve Visitor Center)

BOARD OF DIRECTORS

Executive Committee Members:

Patty Dreier (President)
Ice Age Trail Alliance

Donna VanBuecken (Vice President)
Wild Ones Natural Landscapers Ltd. - Fox Valley Area Chapter

Jerry Knuth (Secretary)
Wisconsin Wildlife Federation

Steven Levine (Treasurer)
Soil & Water Conservation Society - Wisconsin Chapter

Michael John Jaeger (Past Pres. & Exe. Sec.)

Amanda Bell (at Large)
American Water Resources Association - WI Section

Patrick Durkin (at Large)
Wisconsin Outdoor Communicators Association

Ed Harvey (at Large)
Wisconsin Conservation Congress

Gina Miresse (at Large)
Midwest Renewable Energy Association

Mark Randall (at Large)
The Wildlife Society - Wisconsin Chapter

Tom Rudolph (at Large)
Wisconsin Land & Water Conservation Association

Other Directors:

Stan Temple, Senior Fellow
Aldo Leopold Foundation

Janet (Jan) Scalpone
Citizens Natural Resources Association

Mark Redsten, President and CEO
Clean Wisconsin

Greg Dahl, Vice-President
Dane County Conservation League

Jeff Maletzke, State Chairman
Ducks Unlimited - Wisconsin Chapter

Mike Carlson, Executive Director
Gathering Waters

Mike Wollmer, Executive Director
Ice Age Trail Alliance

Richard Beilfuss, President and CEO
International Crane Foundation

Gerald Ernst
Izaak Walton League of America, Wisconsin Div.

Kimberlee Wright, Executive Director
Midwest Environmental Advocates

Don Gilbert
The Muskie Club Alliance of Wisconsin Inc

David Clutter, Executive Director
Natural Resources Foundation of Wisconsin

John Bates
The Nature Conservancy of Wisconsin

Rich Wentzel
The Sierra Club, John Muir Chapter

Linn Beck, State Chairman
Trout Unlimited - Wisconsin Council

Diane Lueck
UWSP College of Natural Resources

Joseph Passineau
Wisconsin Association for Environmental Education

Bob Juracka
Wisconsin Audubon Council

Peggy Farrell, Director
Wisconsin BOW - Becoming an Outdoors Woman

Alan VanRaalte
Wisconsin County Forests Association

Matt Kruger, Director
Wisconsin Land & Water Conservation Association

Jan Harms
Wisconsin Society of American Foresters

Peter McKeever
Wisconsin Society of Ornithology

Tina Van Zile
Wisconsin Tribal Conservation Advisory Council

Tracy Hames, Executive Director
Wisconsin Wetlands Association

Marco Mascitti
Wisconsin Wildlife Federation - Conservation Leadership Corps

Steve and Lois Raether
Wisconsin Woodland Owners Association

FROM THE PRESIDENT *continued from page 1*

about reaching out to become that “someone” in the lives of others who don’t have a guide, a mentor, a teacher, a source of inspiration to engage them in ways that help them ignite their own passion for conservation and sense of belonging in the world outdoors. As we begin to write the pages of a new decade of Wisconsin history, let us resolve to widen our circle and bring more people—new audiences—into our own conservation families, communities, organizations, and stories.

As a graduate student at the University of Wisconsin-Stevens Point studying natural resource management and environmental education from 1986-1988, I had the tremendous honor of delivering the speech to commemorate John Muir’s induction into the Wisconsin Conservation Hall of Fame in 1985. After being asked to prepare the speech for John Muir, I remember thinking, “What could this grad student possibly say to bring honor to such a great man in our history?” Then, I remember reading every book I could find written by or about John Muir. Ten double-spaced pages with handwritten edits later, I had found the words. Thirty-four years later as I write this column as the new President of the Wisconsin

Conservation Hall of Fame, I hold these yellowed pages in my hands. More significantly, I hold John Muir’s spirit in my heart. It didn’t take a speech at a podium for John Muir to give me a lifelong passion to make my own conservation story come alive. It took a love of this planet passed on to me by someone who had it passed on to him.

I remember those red curtains in the Sentry Theatre. I remember the song I had sung at the end of my speech—a simple song I had composed for voice and guitar entitled, “A Tribute.” The Wisconsin Conservation Hall of Fame is our tribute to those who have given us their “all” so we could live more healthy, full and inspired lives today. Their conservation legacies are our lifeblood—all of us who love Wisconsin and our planet. Their legacies give us everything worth anything at all.

Let 2020, the year of our 100th inductee, be the year when each one of us resolves to widen our circle and bring new audiences into our conservation fold. Let us become the “someone” who lights the fire of a conservation ethic within another. Then, let that light shine on the next generation of conservation stories to be cherished.

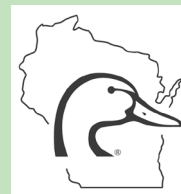
Patty Dreier, WCHF President

WCHF Welcomes Our Newest Organizational Member

Ducks Unlimited, Wisconsin Chapter

Ducks Unlimited started in 1937 during the Dust Bowl when North America’s drought-plagued waterfowl populations had plunged to unprecedented lows. A small group of sportsmen joined together to form what would become Ducks Unlimited. Its mission is habitat restoration, accomplished through science-based delivery of wetland conservation in Wisconsin and across the country.

Ducks Unlimited is a 501(c)(3) non-profit, grassroots, volunteer-based organization. In Wisconsin alone, over 2,200 DU volunteers and a series of partnerships with private individuals, landowners, agencies, scientific communities and other entities, have restored and enhanced over 125,000 acres of wetlands and adjacent habitat with an investment of over \$33 million. For more information visit www.ducks.org.



Board of Governors:

Bill Berry
Tim Eisele

Alan Haney
George Meyer

Jane Wiley

Administrative Assistant:

Sunshine Buchholz

HIGHLIGHTS OF THE 2019 INDUCTION CELEBRATION

The 2019 Induction highlighted the lifelong achievements of Scott Craven, Don L. Johnson, and Aroline Schmitt. Scott Craven was present to accept the recognition plaque from President Michael John Jaeger and the legislative citation from State Representative Katrina Shankland. Douglas Johnson, son of Don L. Johnson, and Ruth Schmitt, daughter-in-law of Aroline Schmitt, accepted on behalf of their families.

A slide show and videos of the event can be viewed on the WCHF Website:
wchf.org/past_inductions

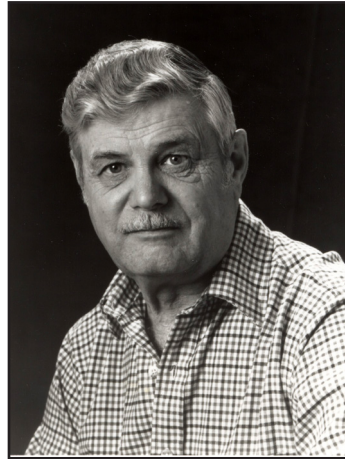
SPEAKERS FOR THE INDUCTEES:

Induction of Scott Craven:

Jamie Nack – Senior Wildlife Outreach Specialist, UW-Madison, Dept. of Forest & Wildlife Ecology, **Richard (Dick) McCabe** – Wildlife



Scott Craven



Don L. Johnson



Aroline Schmitt

Management Institute (retired), **Meredith Gabler (Craven)** – Daughter of Scott Craven

Induction of Don L. Johnson:

Douglas D. Johnson – Son of Don L. Johnson, **Dave Carlson** – Conservation Writer, TV Host and Producer; formerly Outdoors Writer for Eau Claire Leader-Telegram,

Paul Smith – Outdoors Editor, Milwaukee Journal Sentinel

Induction of Aroline Schmitt:

Bill Berry – Writer and WCHF Board of Governors, **Ruth Schmitt** – Daughter-in-law of Aroline Schmitt, **Stacey Bramhall** – Granddaughter of Aroline Schmitt

PRESERVING THE PAST... AND ENSURING OUR FUTURE

The Wisconsin Conservation Hall of Fame was created in 1985 to honor individuals who significantly contributed to the conservation legacy of the state and nation. In the early years, the nomination process was informal—often a note jotted on a slip of paper passed along to the board. After formal guidelines were set, nomination packets were sent by mail and included photographs, newspaper clippings and letters of support. Today, most nominations are submitted digitally.

For the past 30 years, the nominee and inductee files have been stored at the Schmeeckle Reserve Visitor Center. In addition to the 150+ nominee/inductee files are thousands of other WCHF documents and historical records.

Schmeeckle staff are remodeling the area where the WCHF documents are stored. In the process of relocating files, we have an opportunity to

organize, update and archive. Over the next two years, files will be transferred to digital format and archived. Eventually, physical copies will be permanently housed at the UW-Stevens Point Archives.

The project is being funded through grants and donations. We need your help to achieve our fundraising goals!

2 Year Project goal: \$9,000. **Funds used for:** Student and project coordinator wages; document/photo scanner; digital storage; filing supplies. **Grants & donations to date:** \$4,050. **Funds still needed:** \$4,950.

Help us preserve WCHF history by making a financial contribution to this project. Make checks payable to: Wisconsin Conservation Hall of Fame. Include a note that it is for the WCHF Digitizing Project. Mail to: WCHF, Schmeeckle Reserve

2419 North Point Dr., Stevens Point, WI 54481 or donate online using PayPal from our website: WCHF.org/join-donate. Make a note that it is for the Digitizing Project.

If you have questions contact Sunshine Buchholz, WCHF Administrative Assistant at sbuchhol@uwsp.edu or call 715-346-4992 (Schmeeckle Reserve Visitor Center) and ask for Sunshine.



UWSP Wildlife Biology Major, Ashley King, assists in scanning documents and photos

STEPHEN BORN (1940–)



Photo courtesy of Harry Peterson

Stephen Born is a well-known University of Wisconsin-Madison professor who specialized in environmental planning and worked on almost every aspect of water management, in addition to loving all things trout. His impact on conservation in Wisconsin and beyond is broad and varied. Of himself he has said “I have always been haunted by water, and I think some of us are genetically encoded to love water...”

Dr. Born studied at the Universities of Illinois and Oregon before earning his Ph.D. in Geology from the University of Wisconsin. He joined the UW faculty in Madison in 1969, holding positions in the Department of Urban and Regional Planning and the Institute for Environmental Studies. In the mid-1970s, Dr. Born took a leave of absence from academia to serve in Wisconsin’s state government as Director of the State Planning Office and State Energy Director.

Dr. Born was dedicated to both academic research and applied practice. Professor Born was an exceptional teacher and his students today play important roles in public sector resource management,

nonprofit conservation advocacy, and private sector sustainability efforts. He played many key roles in policy development on Wisconsin’s groundwater management, lakes policy, river restoration and coastal resources. He was an early advocate of integrated resources management and his work is still cited today. His publications and activities illustrate his talent for devising practical solutions to watershed problems and development of conservation strategies.

Dr. Born’s contributions include co-chairing the Waters of Wisconsin Initiative of the Wisconsin Academy of Sciences, Arts and Letters. He was a chief advisor to former Governor Patrick Lucey on the decision not to dam the Kickapoo River, which led to the creation of the 8,500-acre Kickapoo Reserve. And he served on Governor Tommy Thompson’s Blue Ribbon Stewardship Task Force, leading to a significant bi-partisan land protection program in Wisconsin.

Dr. Born has played major roles in non-governmental conservation organizations including the River Alliance of Wisconsin and the 1000 Friends of Wisconsin. This aspect of his work may best be illustrated by his extensive involvement in Trout Unlimited, where he served in many state and national senior leadership roles. His influential efforts brought sophisticated strategic planning to Trout Unlimited, while at the same time enhancing the role and influence of its grassroots volunteers.



“His contributions, like the guidance he provided as a teacher, have shaped the lands and waters of our state in critical ways, even as they have rippled out far beyond Wisconsin.”

~ Curt Meine



STEPHEN BORN
1940-

“His contributions, like the guidance he provided as a teacher, have shaped the lands and waters of our state in critical ways, even as they have rippled out far beyond Wisconsin.”
Curt Meine

“His common sense for the dimensions and framework on which public policy should be based are unrivaled.”
John J. Magnuson

INDUCTED INTO THE
WISCONSIN CONSERVATION HALL OF FAME
APRIL 25, 2020

An intrepid angler, he is also co-author of “Exploring Wisconsin Trout Streams: The Anglers Guide,” a seminal work which focuses not only on where to fish, but also stream ecology and protection of cold-water resources.

Dr. Born excelled in bringing people with differing views and ideologies together to forge unified and strong coalitions to protect Wisconsin’s natural resources. And since he continues to serve non-profit groups as a board member or volunteer, his resume and influence continues to grow.

“His common sense for the dimensions and framework on which public policy should be based are unrivaled.”

~ John J. Magnuson

JENS JENSEN (1860–1951)



Photos courtesy of William H. Tishler

Danish-born Jens Jensen was a landscape architect and a tireless advocate for conservation of our natural heritage. Aesthetics, in his work, always came second to protecting nature. Through his vocation and avocation, his aim was to bring people and nature together. Upon his death, the New York Times called him “Dean of American Landscape Architecture.”

Jensen began working for the City of Chicago in the 1880s, rising through the ranks from park laborer to the position of superintendent and landscape architect of the city’s Western Parks District. He was instrumental in developing a plan for parks throughout Chicago and in establishing the Cook County Forest Preserve, a collection of dozens of wetlands, forests, and prairies throughout greater Chicago. Well ahead of his time, Jensen was one of the first landscape architects to incorporate native plants into his designs, along with paying significant interest to a location’s topography and geographic features.

Jensen also developed a successful private design practice in the Chicago area, designing gardens and estates for many wealthy clients. Jensen became well-connected with Chicago’s cultural elite through his work for the city and with his private practice. He also became increasingly prominent as an

advocate for protecting wild areas, both those remaining within urban areas and others across the countryside.

Jensen was a persistent proponent for national parks, forest preserves, state parks, state forests, scenic areas, county parks, and sanctuaries with notable successes in Wisconsin, Illinois, Minnesota and Florida. In 1913 he initiated Friends of Our Native Landscape, recruiting members and support from his society friends and connections. Aldo Leopold was a prominent member of the Wisconsin Chapter. The Friends was the first significant private organization in the Midwest dedicated to conservation. One of the first efforts of this group was

“Unlike other landscape architects of the period, Jensen was not content to create works of art for society’s elite. Instead, Jensen was concerned with improving the American environment in general and thereby improving its people and culture.”

~ William H. Tishler

“Just as important as his land conservation work was his earnest and passionate promotion of native plants for gardens and landscapes.”

~ Michael J. Schneider



Jensen felt all people should have access to natural settings, be it public city parks, rural nature preserves, or in the landscaping of private properties.



JENS JENSEN
1860-1951

“Unlike other landscape architects of the period, Jensen was not content to create works of art for society’s elite. Instead, Jensen was concerned with improving the American environment in general and thereby improving its people and culture.”
William H. Tishler

“Just as important as his land conservation work was his earnest and passionate promotion of native plants for gardens and landscapes.”
Michael J. Schneider

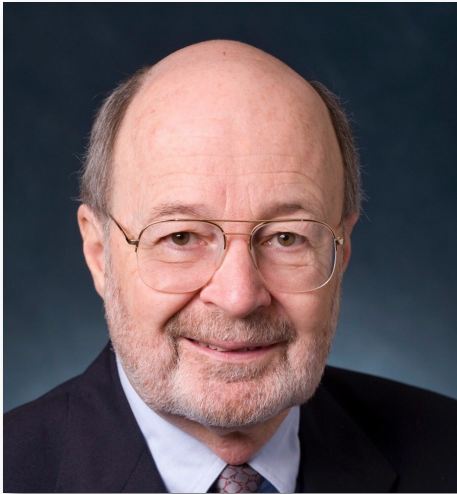
INDUCTED INTO THE
WISCONSIN CONSERVATION HALL OF FAME
APRIL 25, 2020

helping establish protection of Indiana Dunes National Lakeshore along the southern shore of Lake Michigan.

After 1920 when his city position was eliminated, Jensen’s work revolved around his private practice. Significantly, he also started spending time vacationing in Door County, Wisconsin. Jensen lived full-time in Door County from 1935 until his death in 1951. Here he zealously continued his advocacy for protection of natural areas. He was a principal proponent of The Ridges Sanctuary, Cave Point County Park, Whitefish Dunes State Park, and Ellison Bay Bluff County Park among others.

One of Jensen’s many legacies is The Clearing, a folk school established on his Door County property in 1935 with the aim of immersing people in nature for “spiritual renewal.” Initially intended for landscape architect students, he expanded its scope to include the general public. Thousands have attended short courses at The Clearing, now a non-profit school, where Jensen’s philosophy of working with nature is the pervasive theme.

STANLEY TEMPLE (1946–)



Photos courtesy of the Aldo Leopold Foundation

Dr. Stanley A. Temple turned a childhood love of birds into a lifetime of research, education and conservation advocacy. Stan's childhood mentors included Rachel Carson. As a teenager he worked at the Cleveland Museum of Natural History. He developed a passion for raptors and began practicing falconry in junior high school. Stan attended Cornell University and earned his Ph.D. in 1972 while studying at the Cornell Lab of Ornithology. World Wildlife Fund then hired him to launch programs for critically endangered birds on several islands in the Indian Ocean.

Dr. Temple made the move to Wisconsin in 1976, hired as a faculty member in the University of Wisconsin-Madison Department of Wildlife Ecology. Aldo Leopold, one of WCHF's initial Inductees, created and taught the nation's first university wildlife management program at UW-Madison. His successor, one of Leopold's students, was Joseph Hickey, also a WCHF Inductee. Third in line for this historic position was Stan Temple, who continued this amazing tradition for 32 more years.

"Most academic researchers strive to excel in research and instruction and perhaps make modest contributions in outreach. Stan absolutely stands out as one who has excelled also in outreach."

~ William Karasov

Dr. Temple's research program focused on important wildlife conservation issues that needed scientific attention. He and his students studied some of the rarest and most endangered species. He has also worked on the responses of wildlife to habitat fragmentation, human impacts on wildlife populations, and the ecology of avian predators. His pioneering work showing the devastating impact of cats on bird populations has earned him both acclaim and antipathy.

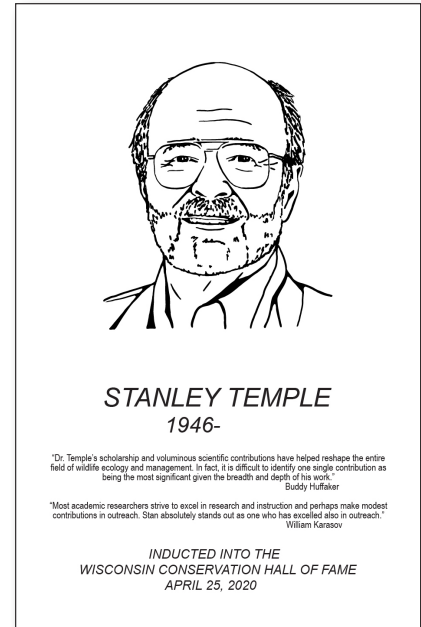
Over 10,000 students have taken one or more of Stan's courses at UW-Madison. In addition, he advised 75 graduate students. He was a founder of the field of conservation biology and helped create an educational program focused on preserving biological diversity while meeting human needs.

"Dr. Temple's scholarship and voluminous scientific contributions have helped reshape the entire field of wildlife ecology and management. In fact, it is difficult to identify one single contribution as being the most significant given the breadth and depth of his work."

~ Buddy Huffaker

Dr. Temple was able to build upon his research and education accomplishments, effectively influencing resource policy and management activities. He has influenced federal and state legislation, served many non-profit conservation organizations, and is a tireless advocate for birds and their habitats.

Now that he's "retired," Stan helps spread Aldo Leopold's Land Ethic as a Senior Fellow for the Aldo Leopold Foundation, researching, writing and speaking about Leopold. Comparing Leopold's original



botanical records to more recent surveys, Temple co-published new research about climate change impacts on plant phenology. He brought the history of the Passenger Pigeon alive to thousands of Wisconsinites with presentations and articles during the 100th anniversary of the pigeon's extinction in 2014. Stan is currently retracing the steps of Leopold's seminal late-1920s game survey of the upper Midwest. Stan Temple continues to teach and mentor students, both through the Aldo Leopold Foundation and as an Emeritus Professor at the University of Wisconsin.

As one of Wisconsin's leading conservation biologists and educators of both future professionals and the public he has had significant impacts globally, nationally and within Wisconsin.



Stan Temple and the Leopold Shack

WITH GRATITUDE, WCHF THANKS ITS 2019 DONORS

Affiliate Members

David and Patti Becker	Claire Hackmann	Jerald and Marilyn Knuth	Cindy Rothfeder
Amanda Bell	Sue and Kent Hall	William G. Kummer	Tom Rudolph
Bill Berry	Alan Haney	Don Last	Janet Scalpone
Scott Craven	Thomas and Linda Hansen	Charles Long	Dale Schaber
Alan Crossley	Milo Harpstead	Richard McCabe	Ruth Schmitt
Jane Dennis	Ron Hensler	George Meyer	Carl Schwartz
Patty Dreier	Robert T. Holland	Gina Miresse	Lillian Spangenberg
Patrick Durkin	Bill Horvath	Edwin Moberg	Christine Thomas
Timothy Eisele	Michael John Jaeger	Leo J. Nickash	Betty Trainer
Bob Elliker	Ann & Tom Johnston	Joe Passineau	Donna J VanBuecken
Mark and Sue Foote-Martin	Charitable Fund at Bluegrass	Judie Pfeifer	Les & Susan Werner
Clifford E. Germain	Community Foundation	Lewis Posekany	Jane Wiley
Michael and Beverly Gross	Steve Kinsel	Elbert Rackow	

Grants/Gifts for Nominee Organizing/Digitizing Project

Citizen's Natural Resource Association	Jaeger Mellerop Family Charitable Trust	Winnebago Audubon Society
Tim & Linda Eisele	Jerald & Marilyn Knuth – Thrivent Choice Dollars	Wisconsin Public Service – Grant
	Thrivent Financial – Action Grant	

Organizational Members

Aldo Leopold Foundation	The Wildlife Society, Wisconsin Chapter
American Water Resources Association, Wisconsin Section	Trout Unlimited, Wisconsin Council
Citizens Natural Resource Association	UWSP College of Natural Resources
Clean Wisconsin	Wild Ones Natural Landscapers
Dane County Conservation League	Wisconsin Association for Environmental Education
Ducks Unlimited, Wisconsin Chapter	Wisconsin Audubon Council
Gathering Waters	Wisconsin BOW - Becoming an Outdoors Woman
Ice Age Trail Alliance	Wisconsin Conservation Congress
International Crane Foundation	Wisconsin County Forests Association
Izaak Walton League, Wisconsin Division	Wisconsin Land and Water Conservation Association
Midwest Environmental Advocates	Wisconsin Outdoor Communicators Association
Midwest Renewable Energy Association	Wisconsin Society of American Foresters
Musky Clubs Alliance of Wisconsin, Inc.	Wisconsin Society of Ornithology
Natural Resources Foundation of Wisconsin	Wisconsin Tribal Conservation Advisory Council
Nature Conservancy, Wisconsin Chapter	Wisconsin Wetlands Association
Sierra Club, John Muir Chapter	Wisconsin Wildlife Federation
Soil and Water Conservation Society, Wisconsin Chapter	Wisconsin Woodland Owners Association

NEW WAYS TO CONTRIBUTE TO WCHF

Thrivent Financial

The Wisconsin Conservation Hall of Fame Foundation, Inc. is enrolled in Thrivent Choice® and listed in the Thrivent Choice online catalog. Thrivent Choice allows eligible members to recommend where Thrivent distributes part of its charitable outreach funds each year. When eligible Thrivent members direct Choice Dollars® to WCHF, Thrivent reviews the recommendation and makes an electronic deposit in our bank account the following month. Those funds may be used to carry out the WCHF mission. If you have questions about Thrivent Choice, please contact 1-800-847-4836 or email mail@thrivent.com. More information: www.thrivent.com/making-a-difference/files/32433.pdf



IRA Contributions

If you are age 70 ½ or older, consider directing your required annual IRA distribution to The Wisconsin Conservation Hall of Fame Foundation, Inc. Qualified individuals can contribute up to \$100,000 from their IRA directly to a charity. Doing so lowers your personal taxable income, thus saving on your overall tax burden. This qualified charitable distribution is a direct transfer of funds from your IRA custodian, payable to a qualified charity. More information: www.irs.gov/retirement-plans/retirement-plans-faqs-regarding-iras-distributions-withdrawals



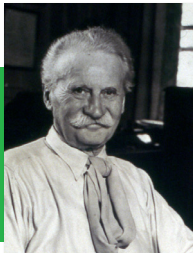
Wisconsin Conservation Hall of Fame
Schmeeckle Reserve
2419 North Point Drive
Stevens Point, WI 54481

NON-PROFIT ORG
U.S. POSTAGE PAID
U.M.S

ELECTRONIC SERVICE REQUESTED



Stephen Born



Jens Jensen



Stanley Temple

The 36th Annual Induction Ceremony
Saturday, April 25, 2020
at The SentryWorld Atrium, Stevens Point

**Celebrate the year of our 100th inductee by donating to the
Wisconsin Conservation Hall of Fame.**

NEW! ONLINE DONATION: wchf.org/join-donate

MAIL IN FORM

**My tax-deductible donation
is enclosed:**

- ☐ Benefactor (\$1000 or more)
- ☐ Patron (\$500)
- ☐ Sustaining (\$100)
- ☐ Supporting (\$50)
- ☐ Sponsor (\$25)

Thank you!

Name (individual/group): _____

Mailing Address: _____

Email: _____

Please enclose check and mail to:

**Wisconsin Conservation Hall of Fame
Schmeeckle Reserve
2419 North Point Drive
Stevens Point, WI 54481**